

Downhill Dan 35 is a quick-to-install, recessed down-lighter profile. The asymmetric mounting bracket makes this product unique and means that it can be installed with the LED strip already attached. Downhill Dan 35 has plenty of power for a huge range of applications. Silver anodised or white powder coat are standard finish options.

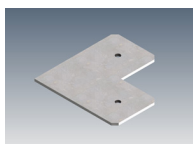
MOUNTING OPTIONS			DIFFUSER OPTIONS			SUPER SERIES LED STRIP OPTIONS		
Recessed			Satin			Lumens per metre	Watts per metre	Colour temp.
						270lm		2700K
						280lm	2.6W	3000K
						300lm		4000K
						470lm		2700K
						600lm	5W	3000K
						640lm		4000K
						1250lm		2700K
						1270lm	11W	3000K
						1400lm		4000K
						2000lm		2700K
						2000lm	17W	3000K
						2130lm		4000K
						2190lm		2700K
						2340lm	20.3W	3000K
						2460lm		4000K

- LED strip options vary depending on region – please consult your local distributor for more information. Other LED strip options are available on request, including IP65 and RGBW colour change.  
- All lumen values refer to the bare LED strip. Losses through diffuser/profile are not represented. Consult photometric data.  
- 5 year manufacturer's warranty on Super Series LED strip.

## ACCESSORIES



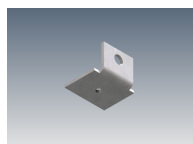
JN-ST-23  
Straight joiner



JN-90-23  
90 degree joiner



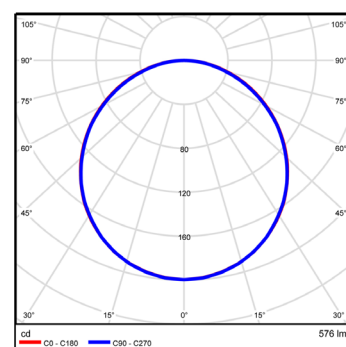
MB-DD35  
Mounting bracket



SMRB  
Seismic restraint bracket

## ADDITIONAL INFORMATION

Applications	General downlighting in kitchens, living rooms, dining rooms, reception counters, lobbies.
Installation	Interior or exterior (with IP65 rated LED strip).
Materials	Extruded aluminium body, PMMA diffuser, aluminium end caps.
Finish	Natural silver anodised, Mannex White powder coat or custom powder coat colours.
Light source	LED ribbon strip.
Power supply	24V DC - remote driver options ranging from 6W up to 320W.
Dimmable	Various options available, please enquire.



Polar curve for 2250 lumen LED strip with satin diffuser.



