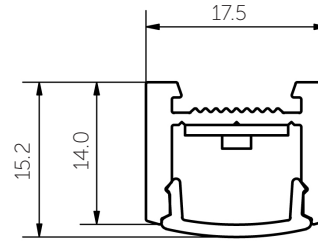
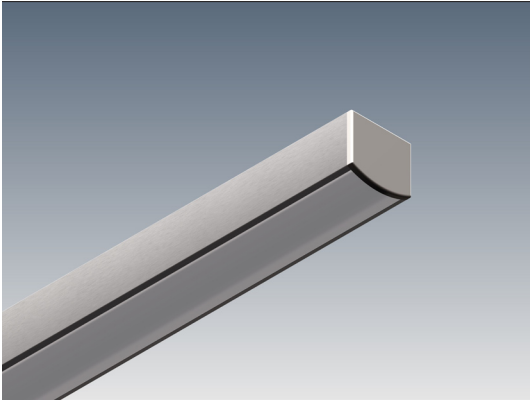


Downhill Dan 14

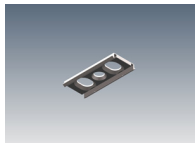


The Downhill Dan 14 extrusion is a compact solution providing dot-free lighting. A versatile system suitable for various mounting options, Downhill Dan 14 can be surface mounted, recessed and suspended. Both wire and rod suspension options are available for the Downhill Dan 14 extrusion and the recessing system for plasterboard ceilings and walls, creates a perfect trimless recessed finish every time.

MOUNTING OPTIONS	DIFFUSER OPTIONS	SUPER SERIES LED STRIP OPTIONS		
Surface mounted	Opal	Lumens per metre	Watts per metre	Colour temp.
Recessed	Clear	290lm		2700K
Rod suspended		330lm	2.6W	3000K
Wire suspended		360lm		4000K
		550lm		2700K
		640lm	5W	3000K
		680lm		4000K
		1230lm		2700K
		1320lm	11W	3000K
		1380lm		4000K

- LED strip options vary depending on region – please consult your local distributor for more information. Other LED strip options are available on request, including IP65, IP67 & RGBW colour change.
- All lumen values refer to the bare LED strip. Losses through diffuser/profile are not represented. Consult photometric data.
- 5 year manufacturer's warranty on Super Series LED strip.

ACCESSORIES



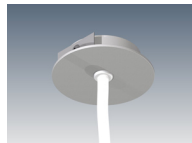
JMC-12
Joinery mounting clip



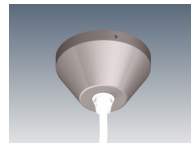
JN-ST
Straight joiner



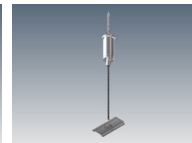
JN-90
90 degree joiner



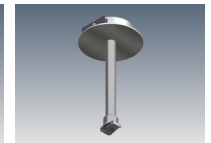
CB-60-R-S / CB-60-R-W
Cable base 60, recessed



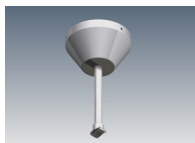
CB-80-SM-S / CB-80-SM-W
Cable base 80, surface mount



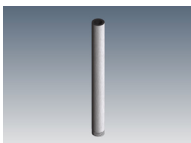
SWK-1-2M / SWK-1-4M
Wire suspension



SRK-1-S / SRK-1-W
Rod suspension kit (rod not incl)



SRK-6-S / SRK-6-W
Rod suspension kit (rod not incl)



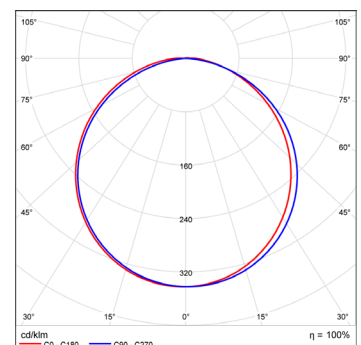
ROD-0.5M / ROD-1M / ROD-2M
Suspension rod - 0.5m, 1m, 2m



MB-ADJ
Adjustable mounting bracket

ADDITIONAL INFORMATION

Applications	Task lighting in kitchen cabinetry, shelving or display units, hallways
Installation	Interior or exterior (with IP65 rated LED strip).
Materials	Extruded aluminium body, polycarbonate diffuser, AES plastic end caps.
Finish	Natural silver anodised or custom powder coat.
Light source	LED ribbon strip.
Power supply	24V DC - remote driver options ranging from 6W up to 320W.
Dimmable	Various options available, please enquire.



Polar curve for 1890 lumen LED strip with opal diffuser.

