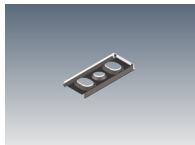


The Angle Andy 25 profile is perfect for mounting in corners of joinery, corners of perpendicular walls or into the corner of a wall and ceiling. Angle Andy 25 features one smooth side, meaning it is not confined to corner mounting, but can also be mounted with one side of the extrusion visible - ideal for wall washing or glass cabinetry.

MOUNTING OPTIONS			DIFFUSER OPTIONS			SUPER SERIES LED STRIP OPTIONS		
Surface mounted			Opal			Lumens per metre	Watts per metre	Colour temp.
Rod suspended			Clear			290lm		2700K
						330lm	2.6W	3000K
						360lm		4000K
						550lm		2700K
						640lm	5W	3000K
						680lm		4000K
						1230lm		2700K
						1320lm	11W	3000K
						1380lm		4000K
						Lumens per metre	Watts per metre	Colour temp.
						1800lm		2700K
						2100lm	17W	3000K
						2200lm		4000K
						2500lm		2700K
						2800lm	20.3W	3000K
						3000lm		4000K

- LED strip options vary depending on region – please consult your local distributor for more information. Other LED strip options are available on request, including IP65, IP67 & RGBW colour change.
- All lumen values refer to the bare LED strip. Losses through diffuser/profile are not represented. Consult photometric data.
- 5 year manufacturer's warranty on Super Series LED strip.

ACCESSORIES



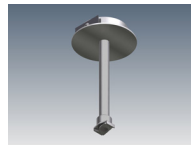
JMC-12
Joinery mounting clip



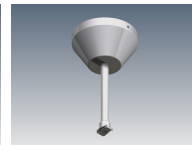
JN-ST-12
Straight joiner



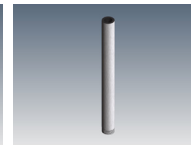
JN-90-12
90 degree joiner



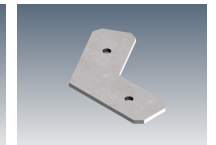
SRK-1-S / SRK-1-W
Rod suspension kit (rod not incl.)



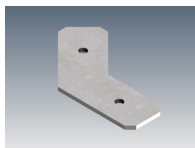
SRK-6-S / SRK-6-W
Rod suspension kit (rod not incl.)



ROD-0.5M / ROD-1M / ROD-2M
Suspension rod - 0.5m, 1m, 2m



JN-120-12
120 degree joiner



JN-135-12
135 degree joiner

ADDITIONAL INFORMATION

Applications	Task lighting in kitchen cabinetry, lighting for shelving or display units, hallway lighting, wall-washing.
Installation	Interior or exterior (with IP65 rated LED strip).
Materials	Extruded aluminium body, polycarbonate diffuser, AES plastic end caps.
Finish	Natural silver anodised or custom powder coat.
Light source	LED ribbon strip.
Power supply	24V DC - remote driver options ranging from 6W up to 320W.
Dimmable	Various options available, please enquire.

